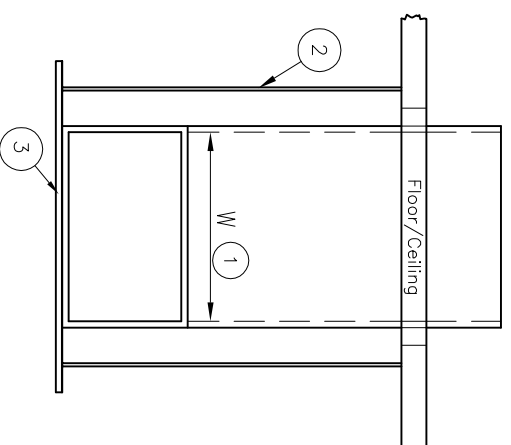
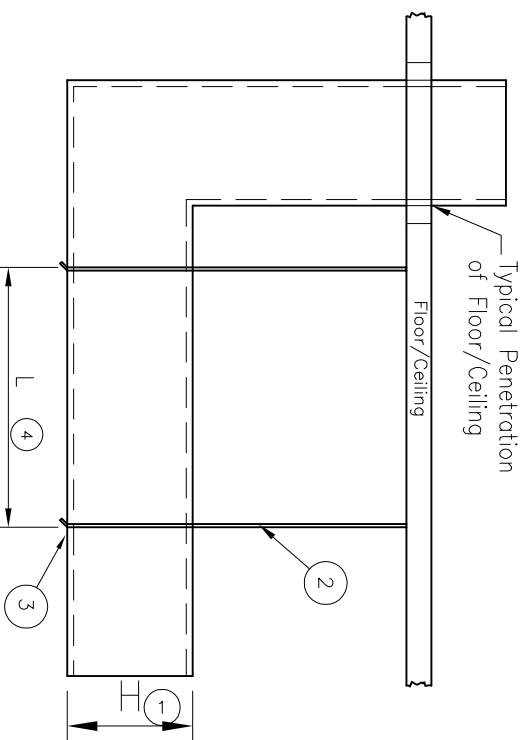
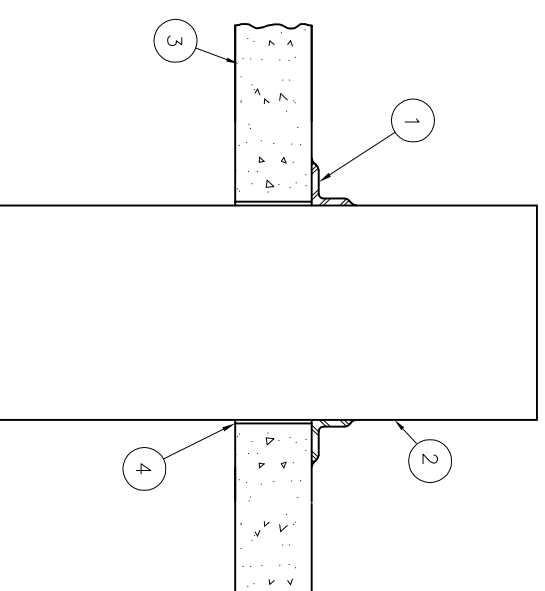


# FyreWrap® Elite® 1.5 Duct Insulation Typical Duct Support Details



## Typical Vertical Duct Support Details



## Typical Horizontal Duct Support Details

Legend:			
1	Max. Duct Size (HxW)	49" x 49"	49" x 49"
2	Steel Threaded Rod	3/8" diameter	1/2" diameter
3	Steel Angle	1 1/2" x 1 1/2" x 8"	2" x 2" x 1/4"
4	Support System Spacing (L)	60"	72"

Legend:	
1	Duct Support Mechanism
2	Grease Duct
3	Fire Resistive Concrete Floor/Ceiling Assembly
4	Firestop System (Figure 4)