

## A30 ALUMINIUM DECK

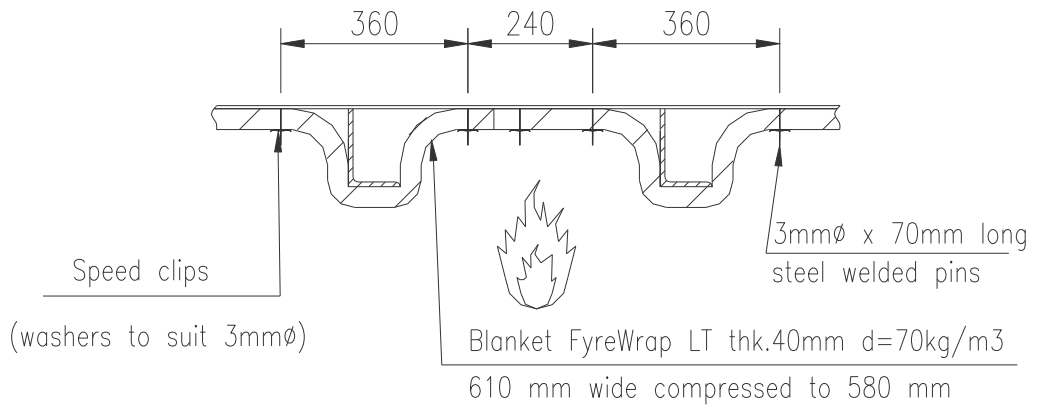
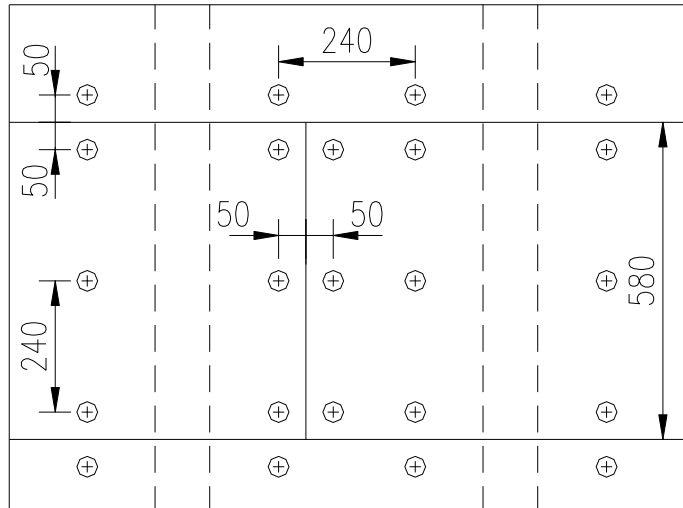
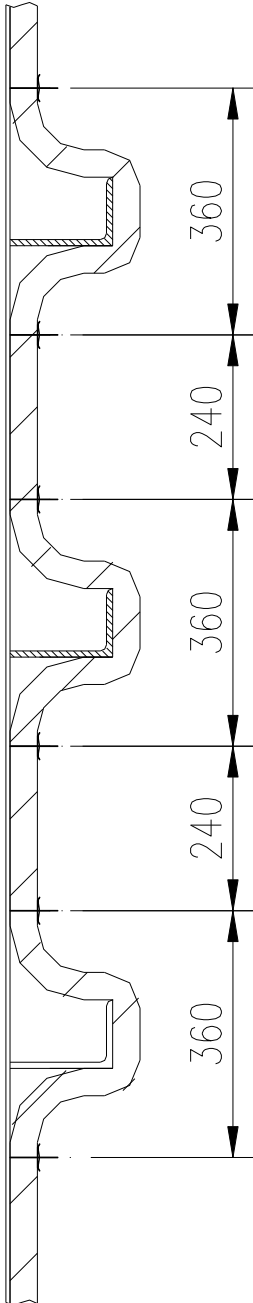
- MATERIAL:** FyreWrap LT Blanket
- INSULATION:** 1 layer of FyreWrap LT Blanket 40mm x 70 kg/m<sup>3</sup> density over the deck plate and stiffeners.
- INSTALLATION:** The blanket is held by ø3mm steel welded pins and speed clips.
- The blanket is wrapped around the stiffeners following the profile of the aluminum structure.
- The blanket will be installed horizontally.
- WEIGHT:** 2.80kg/m<sup>2</sup>
- CERTIFICATION:** Lloyds Register - MED 1850099  
- SAS F180134

This is a legal document and Unifrax own the copyright. Under no circumstances should this document be changed in any way without prior agreement from Unifrax.

Drawing Ref:

1219-R3-12 Rev. 3

June 2018



This is a legal document and Unifrax own the copyright. Under no circumstances should this document be changed in any way without prior agreement from Unifrax.

**FIRE PROTECTION WITH  
INTEGRITY AND TRUST**

