



## 30 min HSC Deck

**MATERIAL:** FyreWrap LT Blanket

**INSULATION:** 1 layer of FyreWrap LT Blanket 35 mm x 70 kg/m<sup>3</sup>  
1 strip of 350 mm wide 35 mm x 70 kg/m<sup>3</sup> blanket installed vertically over the stiffeners.

**INSTALLATION:** The blanket is held by ø3mm steel pins and speed clip washers.

Steel pins are secured in welded aluminium ferrules. Pins are 60 mm long (100mm long pins used at strips).

The blanket is installed vertically between the "T" shaped stiffeners.

**WEIGHT:** 2.45 kg/m<sup>2</sup>

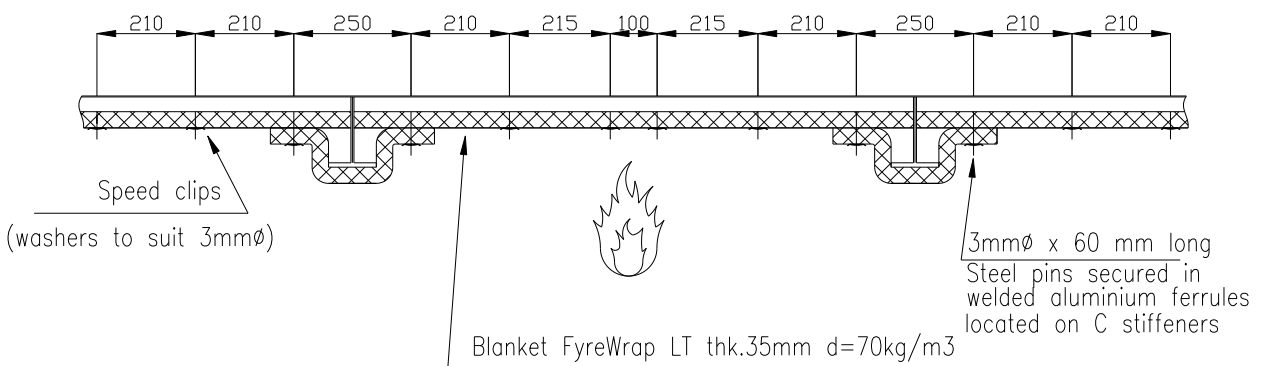
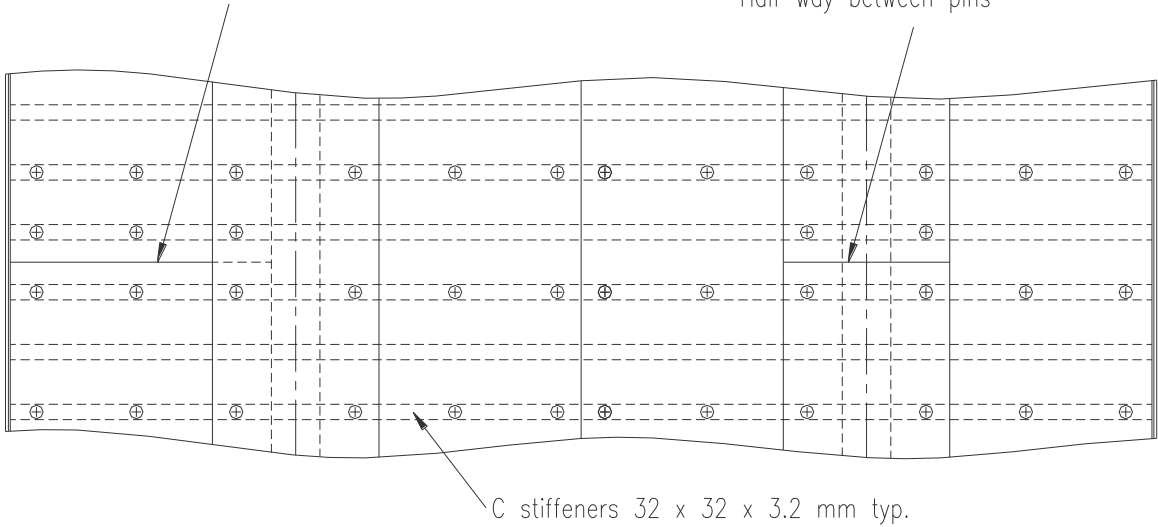
**CERTIFICATION:** Lloyds Reg. - MED 1350157  
- SAS F130239  
DNV.GL - TAF00000HHr1

This is a legal document and Unifrax own the copyright. Under no circumstances should this document be changed in any way without prior agreement from Unifrax.



Typical joint in vertical layer –  
Half way between pins

Typical joint in vertical stiffener layer –  
Half way between pins



This is a legal document and Unifrax own the copyright. Under no circumstances should this document be changed in any way without prior agreement from Unifrax.

**FIRE PROTECTION WITH  
INTEGRITY AND TRUST**

