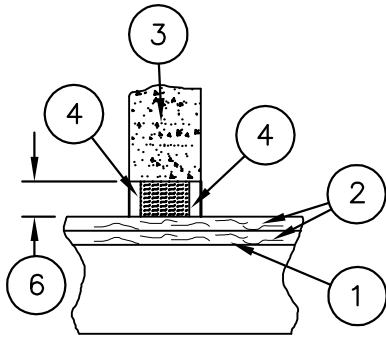


FyreWrap® Elite® 1.5 Duct Insulation Through Penetration Firestops Wall

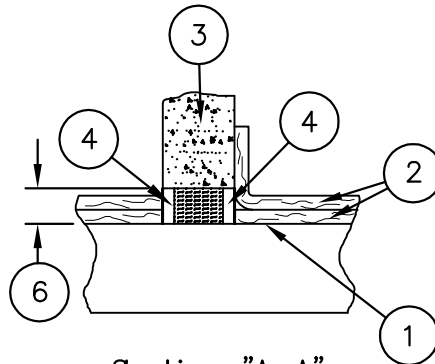
FP-690

Intertek Design No. UNI/BI 120-02 & 120-14 F-Rating=2 Hrs. T-Rating=2 Hrs



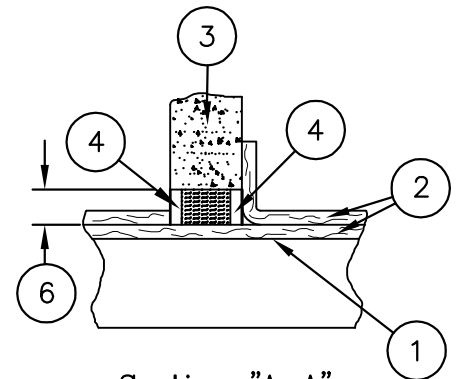
Section "A-A"

Option 1



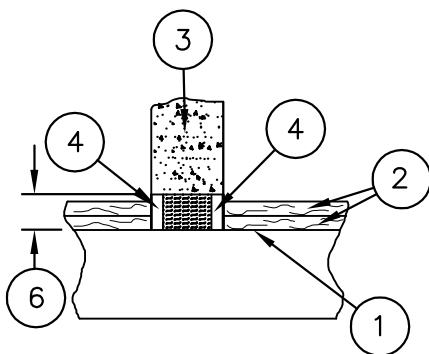
Section "A-A"

Option 2



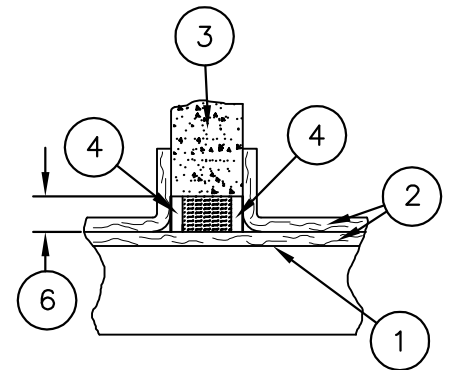
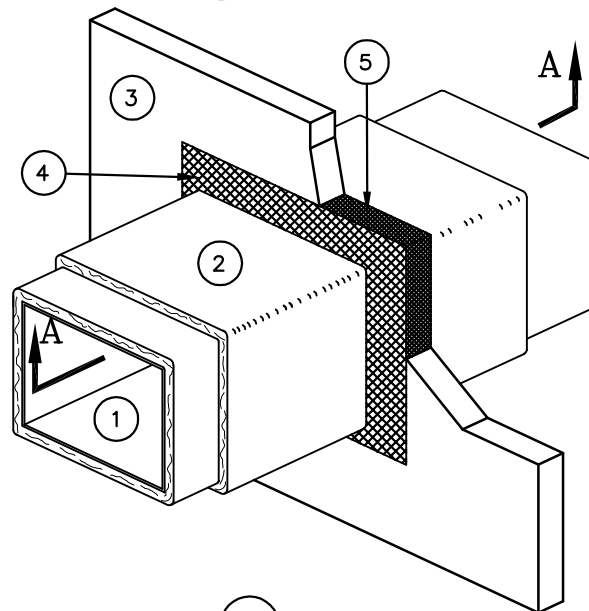
Section "A-A"

Option 3



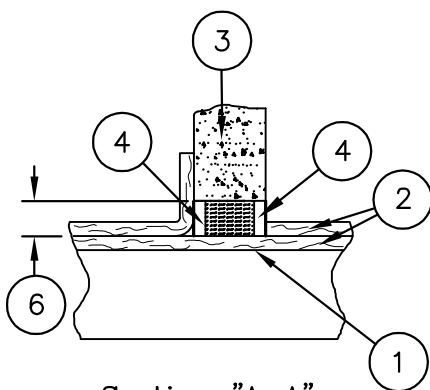
Section "A-A"

Option 8



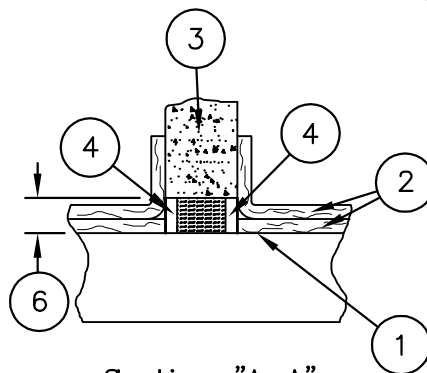
Section "A-A"

Option 4



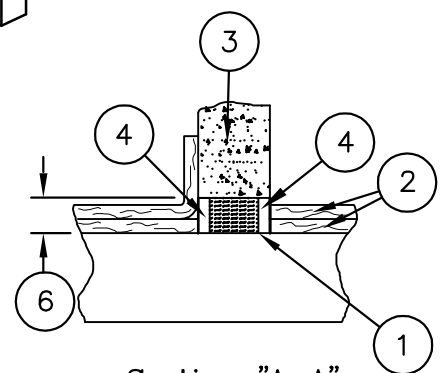
Section "A-A"

Option 7



Section "A-A"

Option 6



Section "A-A"

Option 5

Legend:	
1	Grease Duct, max. 240in ² area, 49" max width
2	FyreWrap® Elite® 1.5 Duct Insulation, Two Layers
3	Fire-Resistive Concrete, Gypsum, or CMU block wall assembly, 2 hr. rated
4	Firestop Sealant, 5/8" depth, overlapping on wall and duct min. 1/2" 3M Fire Barrier 1000NS or Hilti FS-ONE or STI SpecSeal SSS or Tremco FyreSil
5	Unfaced FyreWrap® Elite® 1.5 or 4 PCF Mineral Wool compressed 50% option 1 and 33% options 2-8, recessed 5/8" from both sides of wall
6	Annular space, 1/2" to 4 1/2"